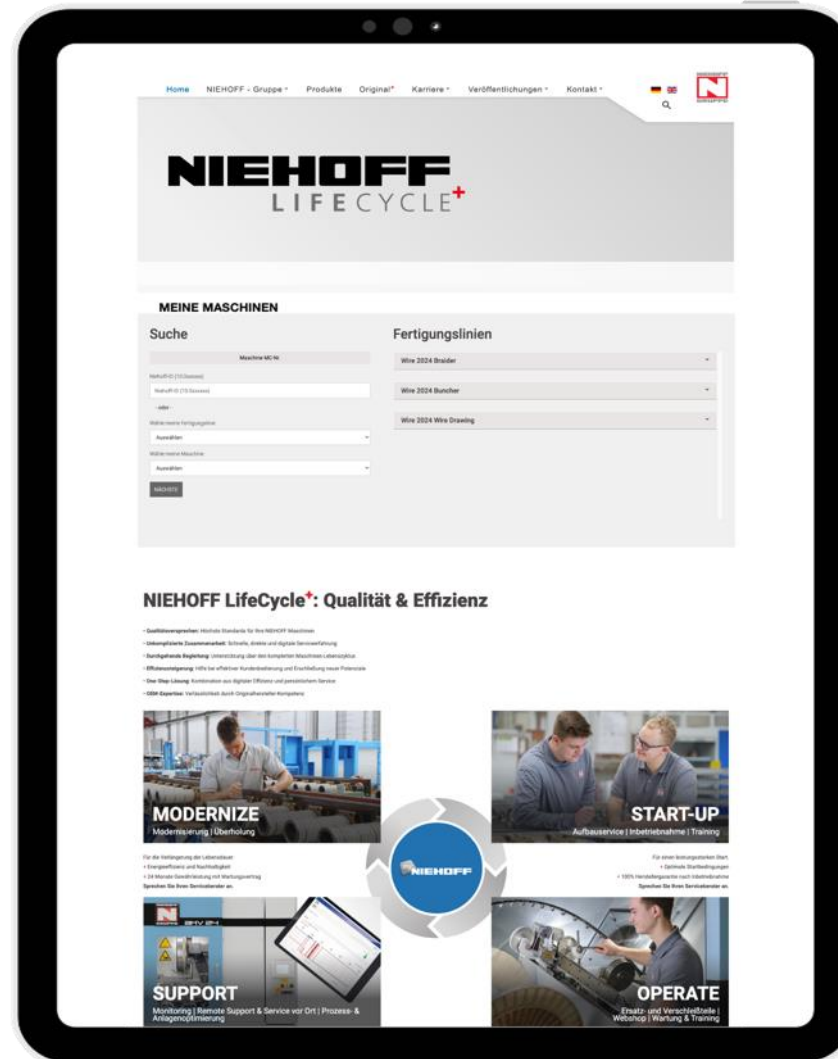


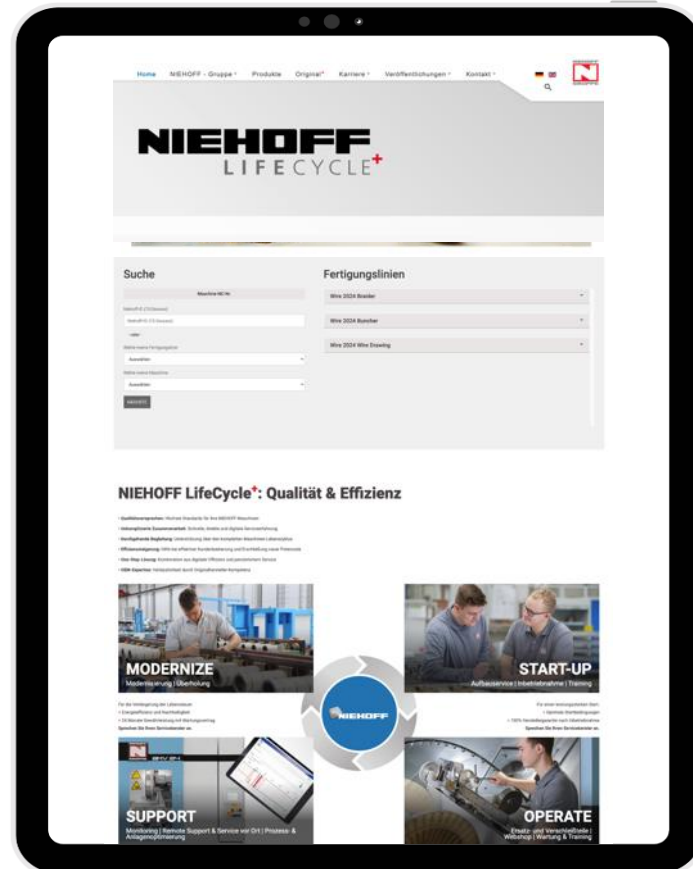
Introduction to the NIEHOFF Web Shop



NIEHOFF Web Shop

➔ YOUR ONE-STOP-PORTAL TO
YOUR individual machines

ONE click to individual offerings



- + ALL information at any time for your machine
Enables proactive planning and reduces time.
- + QUICK and easy identification of appropriate spare / wear parts
Provides self services and saves your time.
- + 24/7 availability and access
Ensures efficient processes without unnecessary waiting times.
Even more to come soon!

DETAILED DATA about YOUR MACHINE

DRAWINGS



PARTS LIST

ASSEMBLY DRAWINGS

ELECTRICAL WIRING PLANS

Article search in all components...

Component title HOUSING	Component identification nr. 336542-5	+INQUIRY
----------------------------	--	----------

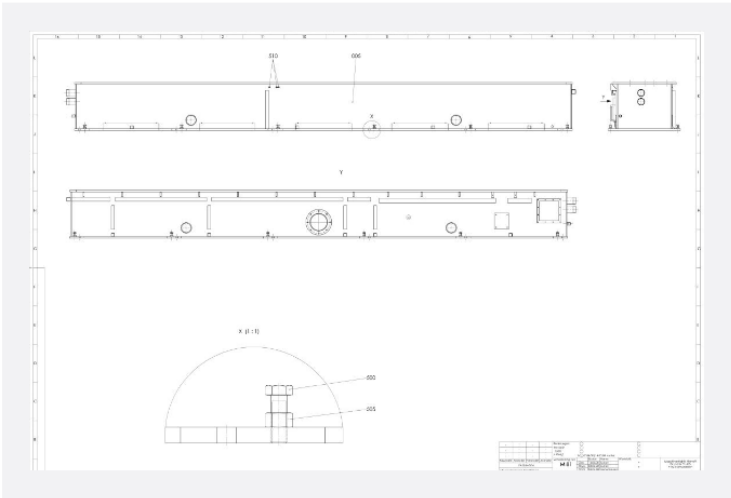
Selected drawing

Assembly drawings

MC-Nr. 10.0

Assemblies

- Component Search...
- MACHINE BASE
- GEAR CASE
- MAIN GEAR
- GEARS
- SHAFT FOR FINAL CAPSTAN
- DRAWING CAPSTAN
- DRAWING CAPSTAN
- DRAWING CAPSTAN
- DRAWING CAPSTAN
- FINAL CAPSTAN
- UNBURDING PULLEY



Related articles

	Material nr. 253893-4	Title HOUSING	Assembly HOUSING	DRAWING
	Position nr. 005		Amount 1	+INQUIRY
	Material nr. 241462-4	Title SHAFT	Assembly HOUSING	DRAWING
	Position nr. 010		Amount 1	+INQUIRY
	Material nr. 233983-4	Title SEALING FLANGE	Assembly HOUSING	DRAWING
	Position nr. 015		Amount 1	+INQUIRY

Single parts of the selected drawing

FAST PART INQUIRY in YOUR CART

The screenshot displays the NIEHOFF website interface. At the top left, the NIEHOFF GRUPPE logo is visible. The user profile for A. MULZER is shown with contact information: 09122 - 977 138 and a.mulzer@niehoff.de. A search bar contains the text "Quick inquiry (enter article number)". The navigation menu includes HOME, MY ORDERS, and MY MACHINES. A shopping cart icon in the top right corner shows "1 Items in cart" and contains buttons for CHECKOUT and DISPLAY CART. Below the navigation, a progress bar indicates five steps: 1. Shopping Cart Overview, 2. Adress, 3. Shipping & Payment Terms, 4. Check & Send, and 5. Done!. A red arrow points to step 5. The main content area shows a "FIXING BOLT" (Item # 272321-2, Production Line: Wire 2024 Buncher - D 632, MC-Nr. [redacted]) with a quantity of 1 piece. A red arrow points to the "Related machine" information. A "SELECT PART FOR INQUIRY" button is located to the left of the product image. At the bottom, there are buttons for REMOVE ARTICLE, CONTINUE SHOPPING, and CONTINUE TO THE NEXT STEP. A quantity selector shows "1 piece".

Select part
for inquiry



Related machine



Automatic inquiry
at NIEHOFF



GET IN TOUCH



+ Don't wait!

Contact us to streamline your spare and wear parts ordering process today!

NIEHOFF
LIFECYCLE⁺

SERVICE@NIEHOFF.DE